

Application Note

Application Note

AN1152

APM32A103xE Series Application Note

Version: V1.0

1 Introduction

This application note provides precautions to be taken when using the APM32A103xE series.

Contents

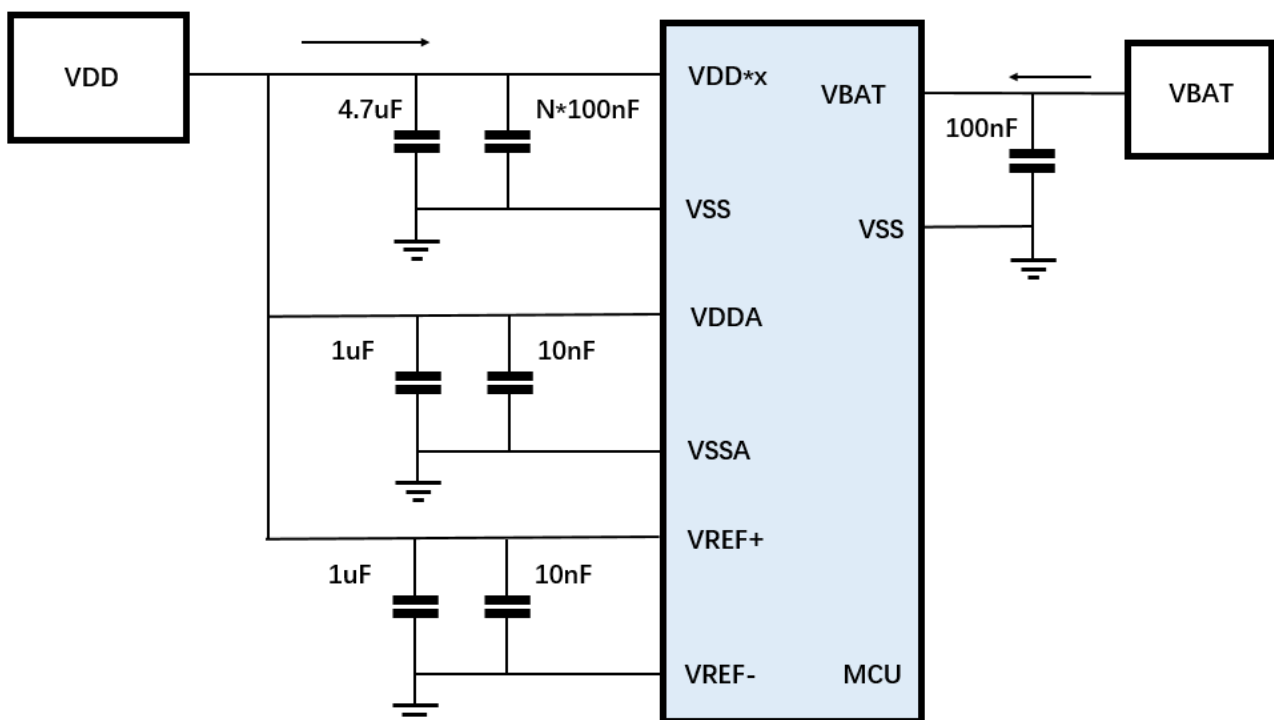
1	Introduction	1
2	Note to Hardware Application Design.....	3
2.1	Design of MCU Filter Capacitor.....	3
2.2	Precautions for MCU Power Supply Ramp Rate	4
2.3	The peripheral module uses VDD and VSS.....	4
2.4	External and High-frequency Signals	5
2.5	Connect the Input/Output signal port to a current limiting resistor in series and connect the capacitor to VSS in parallel.....	5
2.6	IO voltage cannot be higher than VDD voltage.....	6
2.7	Pay Attention to Protection for Exposed Ports	7
3	Precautions for Software Application.....	8
3.1	Precautions for GPIO Operation	8
3.2	USART3 and FSMC Remapping.....	8
3.3	Precautions for obtaining accurate RTC calibration clock output from PC13	8
3.4	USBD and CAN can be used simultaneously	8
3.5	Precautions for CAN2_IO Remapping.....	9
3.6	Precautions for PWR Sleep Mode.....	9
3.7	Precautions for FPU Function	9
3.8	Precautions for Low-power Mode.....	9
3.9	Precautions for Watchdog.....	9
3.10	Precautions for Use of Timers.....	9
3.11	Precautions for I2C.....	9
4	Revision history.....	11

2 Note to Hardware Application Design

2.1 Design of MCU Filter Capacitor

The chip power ports (VDD, VSS) need to be connected in parallel to large and small filter capacitors. The effectiveness of capacitors depends on the optimal placement and connection type. PCB layout requires star-shaped wiring, and it is important to note that the external power supply passes through large and small capacitors and then connects to the chip. The large and small filter capacitors should be placed as close to the chip as possible within 4mm. The capacitor design reference is shown in Figure 1.

Figure 1 Capacitor Design



The VBAT pin can be connected to an external battery ($1.8V < 3.6V$). If there is no external battery, an external 100nF ceramic capacitor should be connected to the VDD power supply together.

VDD must be connected to VDD power supply of an external capacitor (N 100nF ceramic capacitor(s) and a tantalum capacitor not less than $4.7\mu F$). VDD*x represents that the number of VDD is x.

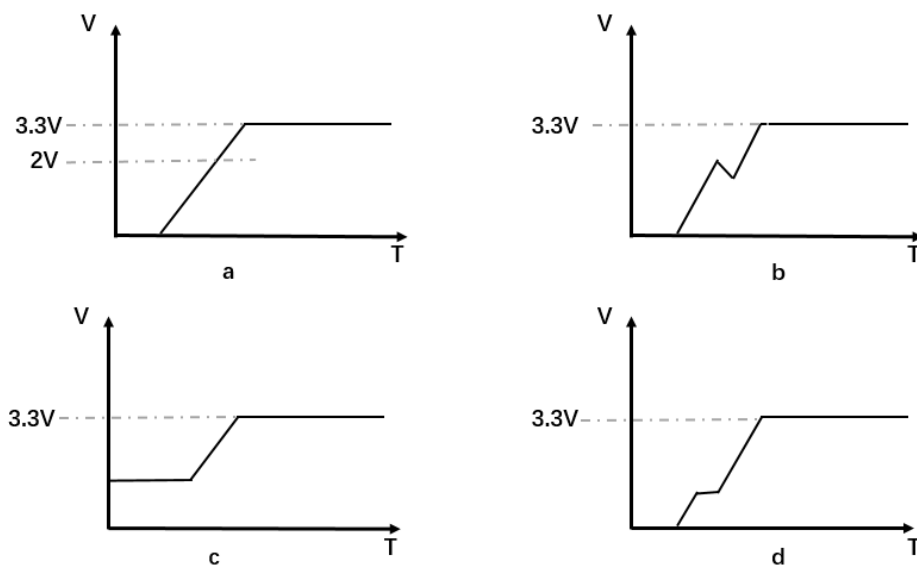
VDDA is connected to VDD, and supplies power to ADC, reset module, RC oscillator and PLL analog part. When ADC is used, VDDA is greater than or equal to 2.4V. VDDA and VSSA must be connected to VDD and VSS respectively.

The VREF+ pin can be directly connected to VDDA or an external reference voltage can be used separately. The voltage range of VREF+ must be between 2.4V and VDDA.

2.2 Precautions for MCU Power Supply Ramp Rate

The MCU's power supply ramp rate should meet the required maximum and minimum value limits, namely greater than 0.5V/min and less than 100V/ms respectively. The power on/down time from 0V to 3V requires at least 30 μ s. Too high or too low power-on rate may cause the MCU to fail to work normally; MCU needs to be powered down to below 300mV before being powered on again, and the above time must meet the requirements within the full temperature range. The power-on startup waveform needs to meet the waveform a in Figure 2, while the other three waveforms are incorrect.

Figure 2 Power-on Waveform



2.3 The peripheral module uses VDD and VSS

When MCU is used to control the power supply or power-on process of external modules, too high power-on rate should be avoided to prevent the problem of VDD voltage being pulled down due to sudden current changes. To ensure stable operation of the system and protect the circuit from potential damage, it is recommended to adopt appropriate delay measures for steady power supply conversion.

Appropriate buffer elements such as capacitors and resistors can be added to the MCU power supply end to buffer the fast power-on and power-down speed of the power supply, so that voltage dip will not be caused to VDD due to instantaneous high current demand. If sudden dip is caused for this reason, the drop speed must also meet the requirements of the MCU's power supply ramp rate. In the scenarios shown in Figures 3 and 4, in order to avoid power fluctuation, connect a buffer circuit (composed of MOS transistor, capacitor, and resistor) in series on the control circuit, or connect a 10R resistor in series and a capacitor of 10 μ F and above on the circuit, to form a fast power-on/power drop protection circuit. If the capacitance is large enough,

the power down will be slow and the power-down magnitude can be very small.

Figure 3 Power Supply of IO Control Peripheral Module

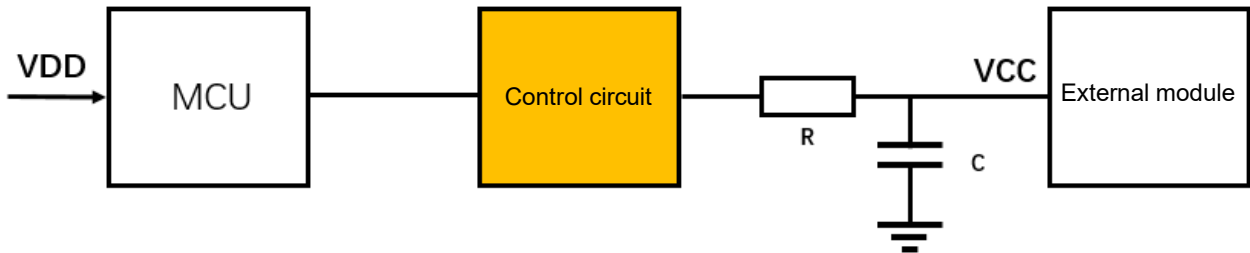
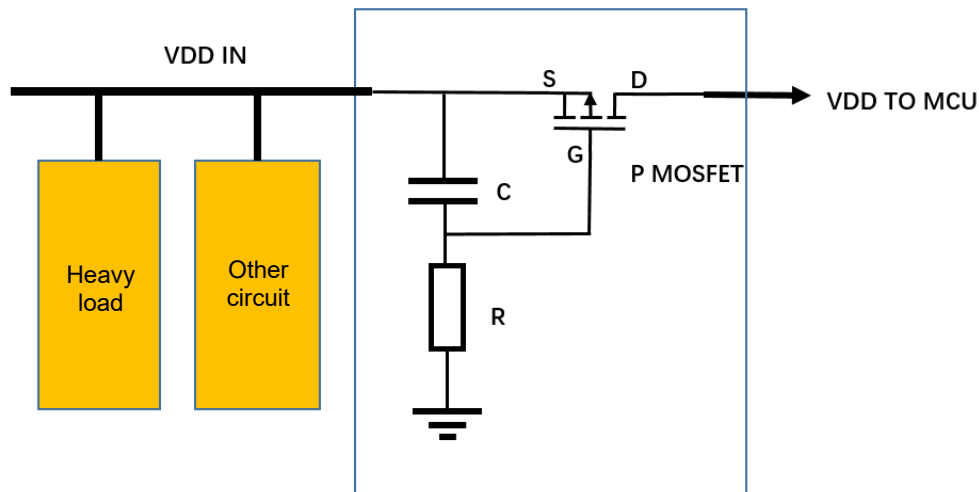


Figure 4 Shared Power Supply for Peripherals



2.4 External and High-frequency Signals

Attention should be paid to checking whether an instantaneous increase in load may be caused by zero-crossing signals, relay signals, AC loads, etc. The load impact can be mitigated by bypass capacitors.

For high-frequency IIC clock lines, high-frequency SPI clock lines, etc., it is important to check whether instantaneous peak currents will be generated.

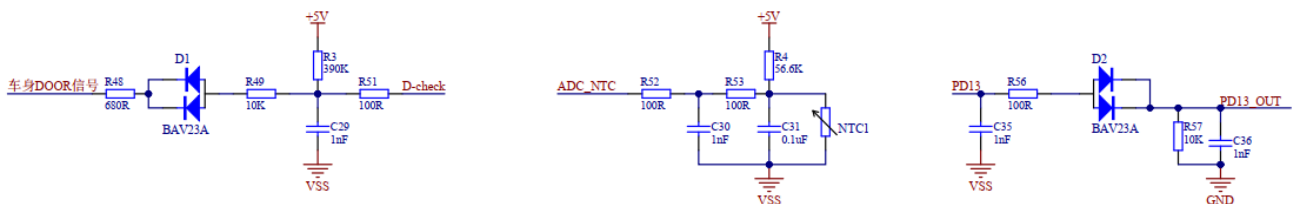
2.5 Connect the Input/Output signal port to a current limiting resistor in series and connect the capacitor to VSS in parallel

For Input/Output ports (e.g. ADC, external interrupts, communication interfaces, etc.), it is recommended to connect to the protective resistors in series in circuit design. The resistance value should be considered and calculated, and the theoretical maximum current should not

exceed the limit parameters that the chip port can withstand; the resistors connected in series and capacitors connected in parallel should be placed as close as possible to the chip pins, and the resistors should be connected in series before the capacitors are connected in parallel. The ground of the filter capacitor of the peripheral module must be connected to the ground that has passed through the large and small filter capacitors (VDD, VSS). As shown in Figure 5, the IO port is connected in series to a 100R resistor and connected in parallel to a 1nF capacitor.

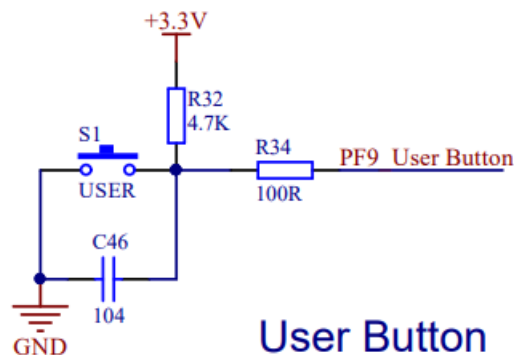
Note that in the design of PCB interconnection (similar to separating lamps from control modules, separating sensors from control modules), this series-connected resistors and parallel-connected capacitors should be placed on the PCB board of the chip. Reasonable parameters and placement positions can effectively prevent damage to the chip ports by ESD/EOS.

Figure 5 An Example of Resistor and Capacitor Connection



For button circuits, the recommendations are as follows:

Figure 6 Button Circuit



As shown in Figure 6, connect a small resistor R34 in series, e.g. 100R, in the GPIO, and place the capacitor C46 as close as possible to the button S1 when designing the PCB So that it can avoid the negative impact pressure generated by buttons.

2.6 IO voltage cannot be higher than VDD voltage

When the IC is not powered by VDD, but there is voltage at the IO port, this voltage will be supplied to the IC through a pull-up protection diode. Or when the IC is powered by VDD, but there is a higher voltage at the IO port than VDD, the voltage difference between this voltage and VDD will cause the pull-up protection diode to conduct, making the current flow into VDD. Under normal circumstances, IO cannot exceed 0.3V above VDD.

This phenomenon can easily cause the following hazards:

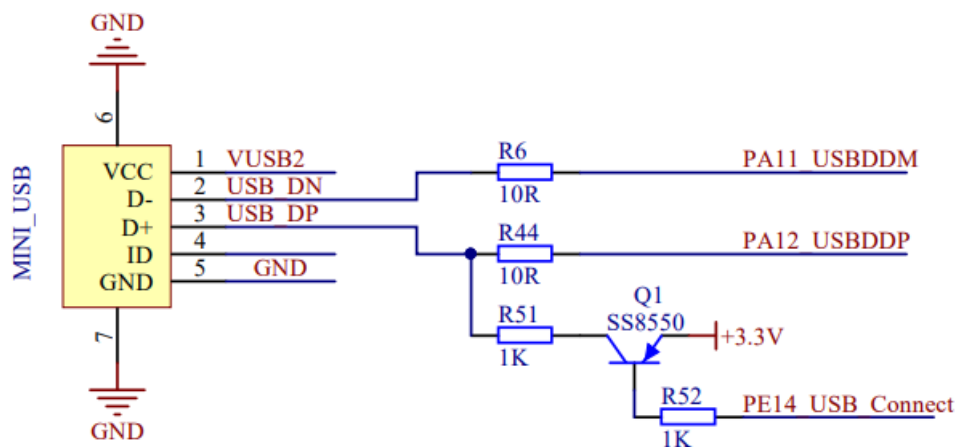
- (1) Too high current will cause the clamp diode on the IO port to quickly overload and be damaged.
- (2) It will make MCU reset unsuccessfully.
- (3) It will cause disorder in the chip program.
- (4) A latch-up effect will result.

2.7 Pay Attention to Protection for Exposed Ports

For communication ports, ESD protection measures are required. A small resistor (e.g. 10R, 100R) can be connected in series on the signal line to limit the amplitude of ESD current; transient voltage suppressor diodes (TVS) can be connected in parallel on the signal line, near the interface position. It is as shown in Figure 7 Communication Circuit.

There is a hot-plugging risk in the burning port, and it should be protected by first contacting GND and then contacting IO during the connection.

Figure 7 Communication Circuit



3 Precautions for Software Application

3.1 Precautions for GPIO Operation

1. Unused GPIO ports should be set to output low level or connect an external 100Ω resistor for pull-down.
2. Different GPIO pins should avoid being configured with the same multiplexing function!
3. When the chip VDD is powered on within the range of 0V-2V, the GPIO port is in an uncertain state, and attention should be paid to the impact of unstable condition of GPIO on the stability of the post-stage drive circuit; when VDD is powered on above 2V, after the chip completes the power-on reset, the status of the GPIO port will be executed according to the program settings.
4. When the GPIO port is configured as a multiplexing push-pull output, it is necessary to connect an external pull-up resistor; when it is configured as a floating input, it is necessary to connect an external pull-up resistor or modify the software to a pull-up input, otherwise the voltage may be affected by external factors and stable levels cannot be outputted or read.

3.2 USART3 and FSMC Remapping

USART3 remapping PD8 and PD9 pins conflicts with FSMC clock. Specifically: when remapping PD8 and PD9 as serial pins, enable FSMC clock but the serial communication cannot be used normally.

Choose either of the following solutions:

Use partial remapping function of USART3 (PC10 and PC11) or default configuration (PB10 and PB11).

When USART3_TX is remapped to PD8 as a serial port pin, disable the SMC function.

3.3 Precautions for obtaining accurate RTC calibration clock output from PC13

RTC can output the internal RTC second pulses, alarm signals, and calibration clocks to the outside through the PC13 pin. The output pulses can be selected by configuring the BAKPR_CLKCAL register.

When LSECLK is used as the clock source for RTC, and the ready flag bit of the external low-speed clock is set to 1, configure the PC13 to output the calibration clock signal after delay for a period of time, or wait for a period of time before measuring the calibration signal. It is important to note that the waiting time may vary with the parameters, temperature, and voltage differences of the crystal oscillator. The recommended delay reference time is 1s.

3.4 USB and CAN can be used simultaneously

USBD1 and CAN2 can be used simultaneously, USBD2 and CAN1 can be used simultaneously, USBD1 and USBD2 cannot be used simultaneously, and CAN1 and CAN2 can

be used simultaneously. Although there are actually two identical USB pins, they cannot be used simultaneously, which means that there is only one. Users can achieve "simultaneous use" through remapping (multiplexing function of pins).

Use according to the recommendations of Datasheet and User Manual.

3.5 Precautions for CAN2_IO Remapping

If CAN2 uses remapping pins (e.g., I/O initialization) and then performs other peripheral remapping operation, CAN2 will fail to remap. It is required to perform CAN2 remapping (e.g., I/O initialization) operation after all peripheral remapping operations.

3.6 Precautions for PWR Sleep Mode

The first execution of the WFE instruction is invalid, and the second WFE instruction can work properly. The reason for this problem is the difference in M3 kernel version.

3.7 Precautions for FPU Function

The larger the input value of FPU is, the higher the probability of occurrence of errors is. Suggest controlling the FPU input value within $\pm 3\pi$. It is important to note that the operation acceleration effect of FPU only applies to the functions in the LIB library, and it has no significant acceleration effect on other operations such as +, -, \times , \div , and matrix permutation.

3.8 Precautions for Low-power Mode

When the FSMC clock is enabled, the power consumption is high when entering the Standby and Stop low-power modes. It is suggested to first turn off the FSMC clock, and then enter the Standby and Stop low-power modes.

3.9 Precautions for Watchdog

The watchdog uses LSI as the clock source, which has low accuracy. Please pay attention to the range indicated in the manual. The program needs to meet the dog feeding interval of maximum frequency.

3.10 Precautions for Use of Timers

To enable output comparison, the corresponding PWM pin function needs to be enabled.

To configure the PWM pin as other multiplexing peripherals, the output comparison function of the timer needs to be disabled.

3.11 Precautions for I2C

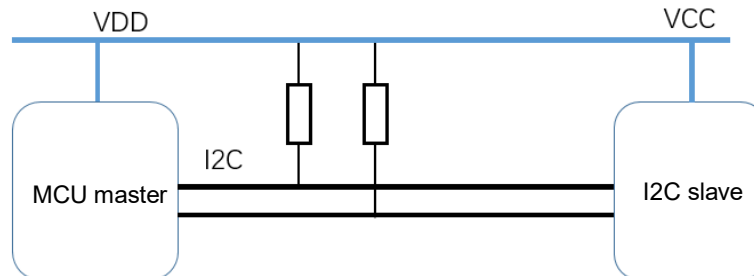
In the process of sudden power failure and recovery of pull-up power supply of SCL/SDA, there is a possibility that the combination of SCL/SDA voltage and logic timing may trigger START but not STOP, resulting in the bus remaining in BUSY state. Recommended avoidance scheme:

1. The pull-up power supply of I2C must be stable to prevent the power supply from dropping

too low due to instability during use. For common scenarios of I2C master-slave communication, the following hardware design is recommended:

- a. The host and slave share power supply;

Figure 8 I2C Communication Circuit



- b. When the host and slave cannot share power supply, it is recommended to connect the power supply of pull-up resistor to the power supply of host MCU.

2. The bus can also be released by resetting the slave. If EEPROM is used as a slave, it is impossible to reset the slave using the software, and the bus release function needs to be added to the I2C host when establishing a new communication. Due to the probability of bus locking, the bus BUSY status timeout function can be added. Combination of the two can improve the robustness of the system.

3. If the I2C device on the bus can recognize power failure, turn off the I2C module before power failure.

4 Revision history

Table 1 Document Revision History

Date	Version	Revision History
March,2025	1.0	New

Statement

This manual is formulated and published by Zhuhai Geehy Semiconductor Co., Ltd. (hereinafter referred to as "Geehy"). The contents in this manual are protected by laws and regulations of trademark, copyright and software copyright. Geehy reserves the right to correct and modify this manual at any time. Please read this manual carefully before using the product. Once you use the product, it means that you (hereinafter referred to as the "users") have known and accepted all the contents of this manual. Users shall use the product in accordance with relevant laws and regulations and the requirements of this manual.

1. Ownership of rights

This manual can only be used in combination with chip products and software products of corresponding models provided by Geehy. Without the prior permission of Geehy, no unit or individual may copy, transcribe, modify, edit or disseminate all or part of the contents of this manual for any reason or in any form.

The "Geehy" or "Geehy" words or graphics with "®" or "TM" in this manual are trademarks of Geehy. Other product or service names displayed on Geehy products are the property of their respective owners.

2. No intellectual property license

Geehy owns all rights, ownership and intellectual property rights involved in this manual.

Geehy shall not be deemed to grant the license or right of any intellectual property to users explicitly or implicitly due to the sale and distribution of Geehy products and this manual.

If any third party's products, services or intellectual property are involved in this manual, Geehy shall not be deemed to authorize users to use the aforesaid third party's products, services or intellectual property, nor shall it be deemed to provide any form of guarantee for third-party products, services, or intellectual property, including but not limited to any non-

infringement guarantee for third-party intellectual property, unless otherwise agreed in sales order or sales contract of Geehy.

3. Version update

Users can obtain the latest manual of the corresponding products when ordering Geehy products.

If the contents in this manual are inconsistent with Geehy products, the agreement in Geehy sales order or sales contract shall prevail.

4. Information reliability

The relevant data in this manual are obtained from batch test by Geehy Laboratory or cooperative third-party testing organization. However, clerical errors in correction or errors caused by differences in testing environment are unavoidable. Therefore, users should understand that Geehy does not bear any responsibility for such errors that may occur in this manual. The relevant data in this manual are only used to guide users as performance parameter reference and do not constitute Geehy's guarantee for any product performance.

Users shall select appropriate Geehy products according to their own needs, and effectively verify and test the applicability of Geehy products to confirm that Geehy products meet their own needs, corresponding standards, safety or other reliability requirements. If losses are caused to users due to the user's failure to fully verify and test Geehy products, Geehy will not bear any responsibility.

5. Compliance requirements

Users shall abide by all applicable local laws and regulations when using this manual and the matching Geehy products. Users shall understand that the products may be restricted by the export, re-export or other laws of the countries of the product suppliers, Geehy, Geehy distributors and users. Users (on behalf of itself, subsidiaries and affiliated enterprises) shall agree and undertake to abide by all applicable laws and regulations on the export and re-export

of Geehy products and/or technologies and direct products.

6. Disclaimer

This manual is provided by Geehy on an "as is" basis. To the extent permitted by applicable laws, Geehy does not provide any form of express or implied warranty, including without limitation the warranty of product merchantability and applicability of specific purposes.

Geehy products are not designed, authorized, or guaranteed to be suitable for use as critical components in military, life support, pollution control, or hazardous substance management systems, nor are they designed, authorized, or guaranteed to be suitable for applications that may cause injury, death, property, or environmental damage in case of product failure or malfunction.

If the product is not labeled as "Automotive grade", it means it is not suitable for automotive applications. If the user's application of the product is beyond the specifications, application fields, and standards provided by Geehy, Geehy will assume no responsibility.

Users shall ensure that their application of the product complies with relevant standards, and the requirements of functional safety, information security, and environmental standards. Users are fully responsible for their selection and use of Geehy products. Geehy will bear no responsibility for any disputes arising from the subsequent design and use of Geehy products by users.

7. Limitation of liability

In any case, unless required by applicable laws or agreed in writing, Geehy and/or any third party providing this manual and the products on an "as is" basis shall not be liable for damages, including any general or special direct, indirect or collateral damages arising from the use or no use of this manual and the products (including without limitation data loss or inaccuracy, or losses suffered by users or third parties), which cover damage to personal safety, property, or environment, for which Geehy will not be responsible.

8. Scope of application

The information in this manual replaces the information provided in all previous versions of the manual.

©2025 Zhuhai Geehy Semiconductor Co., Ltd. All Rights Reserved